



India Meteorological Department
(Ministry of Earth Sciences)

NATIONAL BULLETIN NO. 04 (BOB/05/2023)

TIME OF ISSUE: 0230 HOURS IST

DATED:16.11.2023

FROM: INDIA METEOROLOGICAL DEPARTMENT (FAX NO. 24643965/24699216/24623220)

TO: CONTROL ROOM, NDM, MINISTRY OF HOME AFFAIRS (FAX.NO. 23093750)

CONTROL ROOM NDMA (FAX.NO. 26701729)

CABINET SECRETARIAT (FAX.NO.23012284, 23018638)

PS TO HON'BLE MINISTER FOR S & T AND EARTH SCIENCES (FAX NO.23316745)

SECRETARY, MOES (FAX NO. 24629777)

H.Q. (INTEGRATED DEFENCE STAFF AND CDS) (FAX NO. 23005137/23005147)

DIRECTOR GENERAL, DOORDARSHAN (23385843)

DIRECTOR GENERAL, AIR (23421105, 23421219)

PIB MOES (FAX NO. 23389042)

UNI (FAX NO. 23355841)

D.G. NATIONAL DISASTER RESPONSE FORCE (NDRF) (FAX NO. 26105912, 2436 3260)

DIRECTOR, PUNCTUALITY, INDIAN RAILWAYS (FAX NO. 23388503)

CHIEF SECRETARY, ODISHA (FAX NO. 0674-2536660)

CHIEF SECRETARY, WEST BENGAL (FAX NO. 033-22144328)

CHIEF SECRETARY, ANDHRA PRADESH (FAX NO. 0863-2441029, 08645-246600)

CHIEF SECRETARY, TAMIL NADU (FAX NO 044-25672304)

CHIEF SECRETARY, PUDUCHERRY (FAX NO 0413-2334145)

ADMINISTRATOR, ANDAMAN & NICOBAR ISLANDS (FAX NO. 03192- 232656)

CHIEF SECRETARY, GOVT. OF TRIPURA (FAX NO. 0381-2414013, 2413200)

CHIEF SECRETARY, GOVT. OF MIZORAM (FAX NO. 0389-2322745, 2320588)

CHIEF SECRETARY, GOVT. OF MANIPUR (FAX NO. 0385-2452629)

CHIEF SECRETARY, GOVT. OF NAGALAND (FAX NO. 0370-2270057)

CHIEF SECRETARY, GOVT. OF ASSAM (FAX NO. 0361-2260900)

CHIEF SECRETARY, GOVT. OF MEGHALAYA (FAX NO. 0364-2225978)

Sub: Depression over Westcentral Bay of Bengal

The depression over westcentral Bay of Bengal moved northwards with a speed of 13 kmph during past 6 hours and lay centred at 2330 hours IST of yesterday, the 15th November over the same region near latitude 16.0°N and longitude 86.4°E, about 380 km southeast of Visakhapatnam (Andhra Pradesh), 480 km south of Paradip (Odisha), 630 km south-southwest of Digha (West Bengal) and 780 km southwest of Khepupara (Bangladesh).

It is likely to continue to move nearly northwards and intensify into a **Deep Depression** over Westcentral Bay of Bengal in the morning of 16th November. Thereafter, it would recurve north-northeastwards and reach Northwest Bay of Bengal off Odisha coast on 17th morning and cross Bangladesh coast between Mongla and Khepupara as a Deep Depression with wind speed 50-60 kmph gusting to 70 kmph in the morning of 18th November.

Forecast track and intensity are given below:

Date/Time (IST)	Position (Lat. °N/ long. °E)	Maximum sustained surface wind speed (Kmph)	Category of cyclonic disturbance
15.11.23/2330	16.0/86.4	45-55 kmph gusting to 65 kmph	Depression
16.11.23/1130	17.3/86.6	50-60 kmph gusting to 70 kmph	Deep Depression
16.11.23/2330	18.5/87.0	55-65 kmph gusting to 75 kmph	Deep Depression
17.11.23/1130	19.7/87.7	55-65 kmph gusting to 75 kmph	Deep Depression
17.11.23/2330	20.9/88.8	50-60 kmph gusting to 70 kmph	Deep Depression
18.11.23/1130	22.1/89.9	45-55 kmph gusting to 65 kmph	Depression
18.11.23/2330	23.1/90.5	35-45 kmph gusting to 55 kmph	Depression

Warnings:

(i) Rainfall Warning (graphics enclosed):

- Light to moderate rainfall at many places with isolated heavy rainfall is likely on 16th & 17th November over coastal districts of Odisha & West Bengal.
- Light to moderate rainfall at many places with isolated heavy rainfall is likely over Nagaland, Manipur, Mizoram & Tripura during 16th to 18th November and over south Assam and east Meghalaya on 17th November.

(ii) Wind warning (graphics enclosed):

- **Squally weather** with wind speed reaching **35-45 kmph gusting to 55 kmph** is likely to prevail over southwest Bay of Bengal along & off Tamil Nadu & Puducherry and Sri Lanka coasts on 16th November.
- **Squally wind** speed reaching **45-55 kmph gusting to 65 kmph** is prevailing over westcentral and adjoining south Bay of Bengal and likely to increase becoming **50-60 kmph gusting to 70 kmph** over westcentral Bay of Bengal on 16th November and over northwest and adjoining westcentral Bay of Bengal on 17th November.
- **Along & off Andhra Pradesh Coast: Squally wind speed reaching 40-50 kmph gusting 60 kmph** is likely on 16th November along & off south Andhra Pradesh coast and during 16th to 17th along & off north Andhra Pradesh coast. It would decrease thereafter.
- **Along & off Odisha Coast: Squally wind speed reaching 40-50 kmph gusting 60 kmph** is likely to increase gradually becoming **45-55 kmph gusting to 65 kmph** from 16th morning, **50-60 kmph gusting 70 kmph** from 16th evening till 17th evening and decrease thereafter.
- **Along & off West Bengal Coast: Squally wind speed reaching 40-50 kmph gusting 60 kmph** is likely during 16th morning. It is likely to increase gradually becoming **50-60 kmph gusting 70 kmph** from 16th evening till 17th evening and decrease thereafter.
- **Along & off Bangladesh Coast: Squally wind speed reaching 45-55 kmph gusting 65 kmph** is likely from 16th evening and increase becoming 50-60 gusting to 70 kmph from 18th early morning and decrease thereafter.

(iii) Sea Condition:

- **Rough to very rough sea condition** is likely over
 - Southwest Bay of Bengal along & off Tamil Nadu & Puducherry and Sri Lanka coasts on 16th November.
 - Westcentral and adjoining south Bay of Bengal on 16th November.
 - North and adjoining westcentral Bay of Bengal on 16th to 18th November.

- **Along & off south Andhra Pradesh coast** on 16th November & north Andhra Pradesh coast on 16th to 17th November.
- **Along & off Odisha coast, West Bengal coast and Bangladesh coast** during 16th to 18th November

(iv) Fishermen Warning:

Fishermen are advised not to venture into

- Southwest Bay of Bengal on 16th November
- Westcentral Bay of Bengal during 16th to 17th November
- Northwest Bay of Bengal during 16th to 18th November
- Along & off Andhra Pradesh Coast during 16th to 17th November
- Along & off Odisha coast, West Bengal coast and Bangladesh coast during 16th to 18th November

The Fishermen out at sea are advised to return to coast.

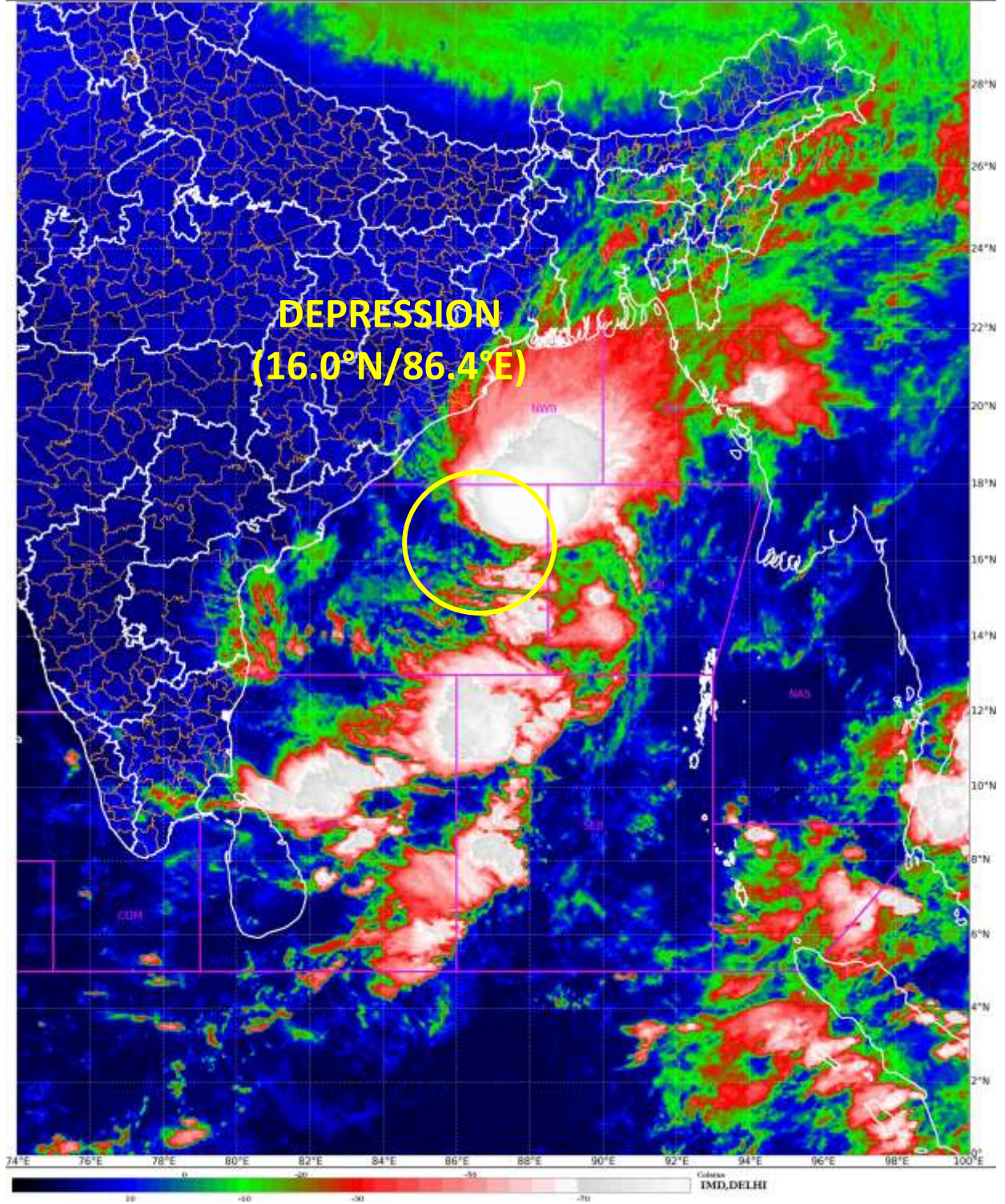
(v) Damage Expected & Action Suggested for coastal areas of Odisha & West Bengal:

- Minor damage to loose/unsecured structures.
- Some breaches in Kutcha road due to flooding.
- Minor damage to small trees like Banana. Papaya and Drumstick and ripe paddy crops.
- Partial Damage to standing crops in coastal areas of Odisha & west Bengal.
- Minor damage to Kutcha embankments.

The system is under continuous surveillance and the next message will be issued at 0830 hours IST of today, the 16th November, 2023.

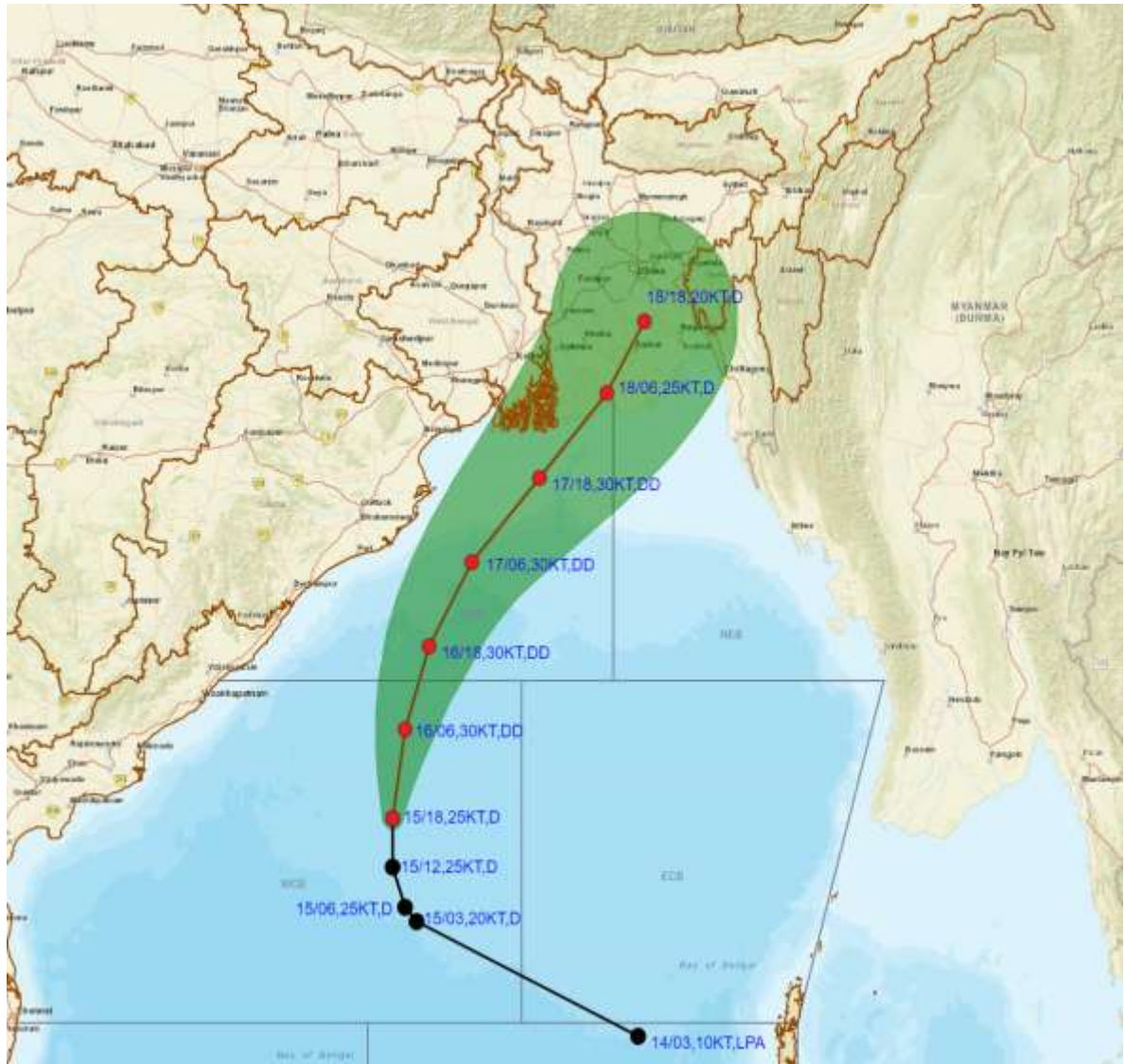
**(Krishna Mishra)
Scientist C, Cyclone Warning, New Delhi**

Copy to: ACWC Mumbai/ ACWC Chennai/ ACWC Kolkata/CWC Ahmedabad/CWC Bhubaneswar/CWC Vishakhapatnam/CWC Thiruvananthapuram/MC Goa





OBSERVED AND FORECAST TRACK AND INTENSITY ALONGWITH CONE OF UNCERTAINTY IN ASSOCIATION WITH DEPRESSION OVER WESTCENTRAL BAY OF BENGAL BASED ON 1800 UTC (2330 IST) OF 15TH NOVEMBER 2023.



DATE/TIME IN UTC

IST=UTC + 0530

L: LOW PRESSURE AREA

WML: WELL MARKED LOW PRESSURE AREA

D: DEPRESSION (17-27 KT)

DD: DEEP DEPRESSION (28-33 KT)

CS: CYCLONIC STORM (34-47 KT)

SCS: SEVERE CYCLONIC STORM (48-63KT)

VSCS: VERY SEVERE CYCLONIC STORM (64-89 KT)

ESCS: EXTREMELY SEVERE CYCLONIC STORM (90-119 KT)

SuCS: SUPER CYCLONIC STORM (≥ 120 KT)

● LESS THAN 34 KT

⊙ 34-47 KT

⊙ ≥ 48 KT

— OBSERVED TRACK

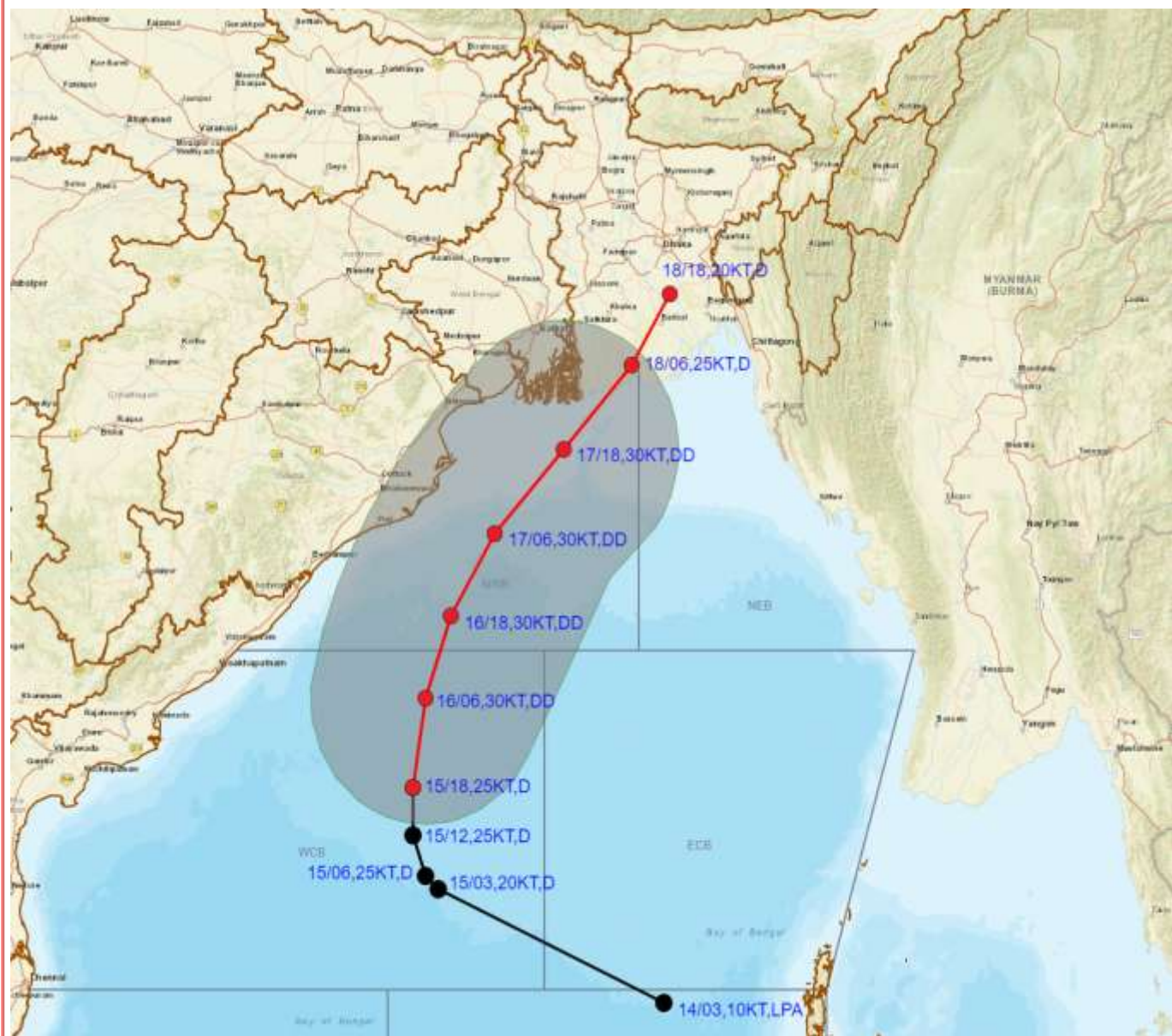
— FORECAST TRACK

▲ CONE OF UNCERTAINTY

Forecast	DISTANCE(KM) AND DIRECTION FROM STATIONS			
Date and Time	PARADIP	DIGHA	KHEPUPARA	CHITTAGONG (AMBAGAN)
16.11.23/1800	200, S	350, S	510, SW	660, SW
17.11.23/0600	130, ESE	210, S	360, SW	510, SW
17.11.23/1800	230, ENE	160, ESE	190, SW	350, WSW



OBSERVED AND FORECAST TRACK AND INTENSITY ALONG WITH QUADRANT WIND DISTRIBUTION IN ASSOCIATION WITH DEPRESSION OVER WESTCENTRAL BAY OF BENGAL BASED ON 1800 UTC (2330 IST) OF 15TH NOVEMBER 2023.



DATE/TIME IN UTC

IST=UTC + 0530

L: LOW PRESSURE AREA

WML: WELL MARKED LOW PRESSURE AREA

D: DEPRESSION (17-27 KT)

DD: DEEP DEPRESSION (28-33 KT)

CS: CYCLONIC STORM (34-47 KT)

SCS: SEVERE CYCLONIC STORM (48-63KT)

VSCS: VERY SEVERE CYCLONIC STORM (64-89 KT)

ESCS: EXTREMELY SEVERE CYCLONIC STORM (90-119 KT)

SuCS: SUPER CYCLONIC STORM (≥ 120 KT)

● LESS THAN 34 KT

○ 34-47 KT

◐ ≥ 48 KT

— OBSERVED TRACK

— FORECAST TRACK

— CONE OF UNCERTAINTY

AREA OF MAXIMUM SUSTAINED WIND SPEED:

— 28-33 KT (52-61 KMPH)

— 34-49 KT (62-91 KMPH)

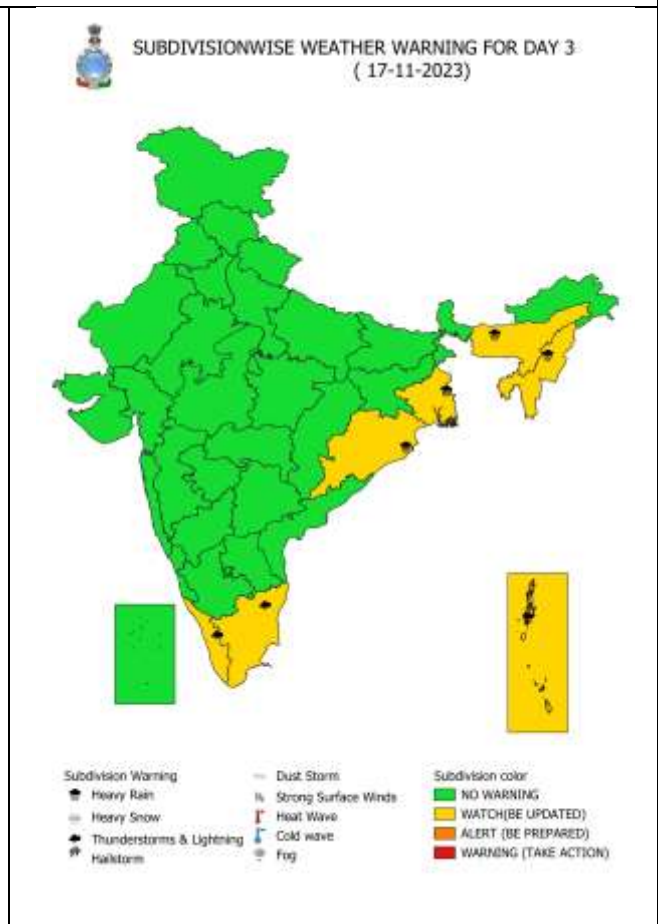
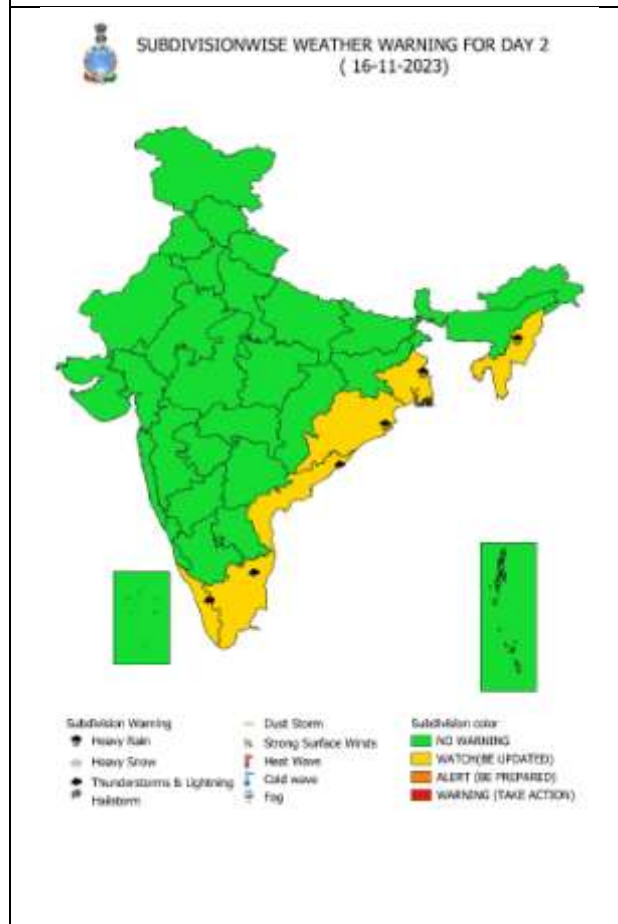
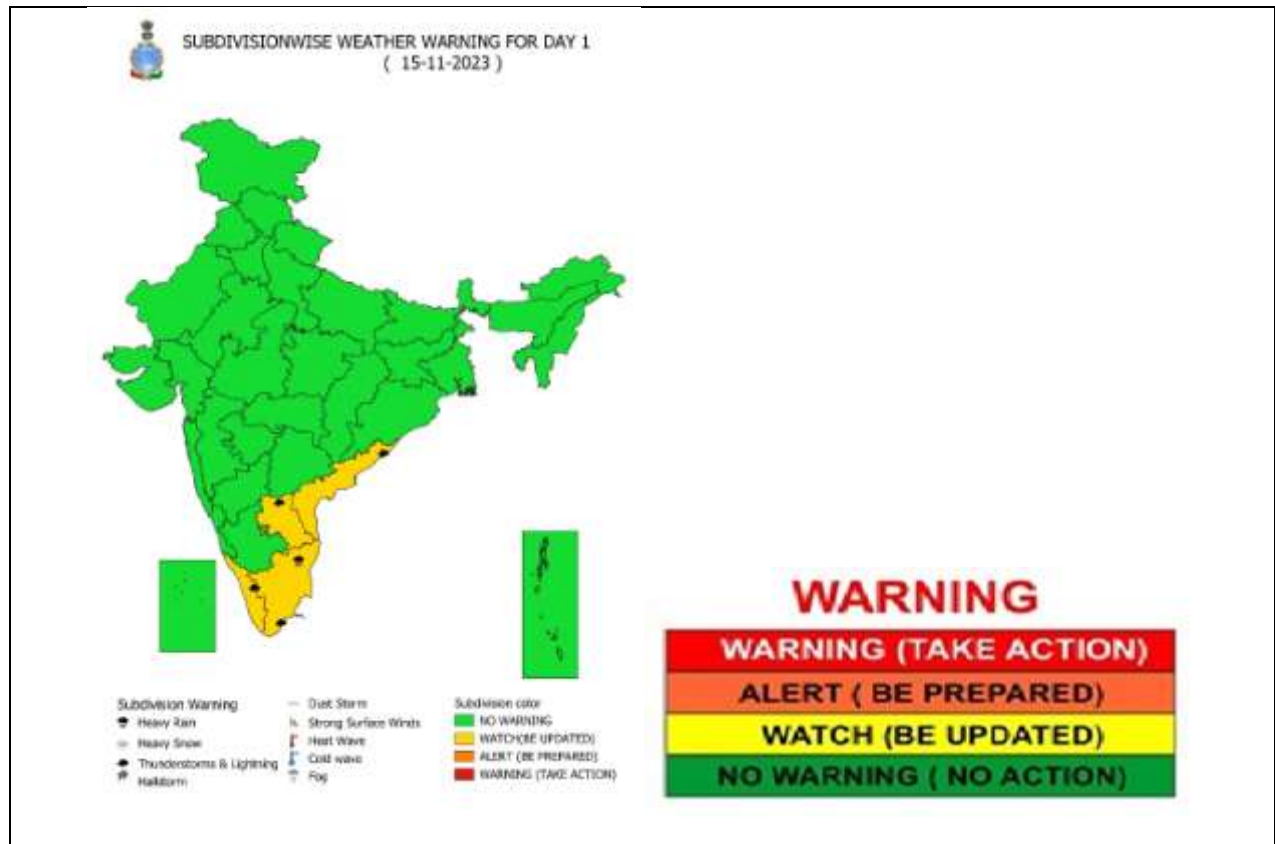
— 50-63 KT (92-117 KMPH)

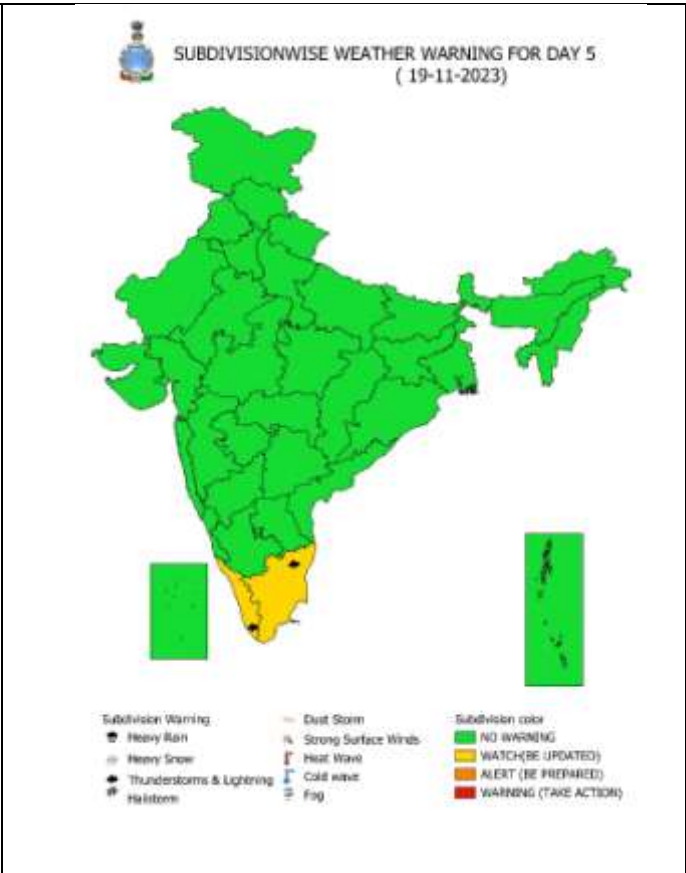
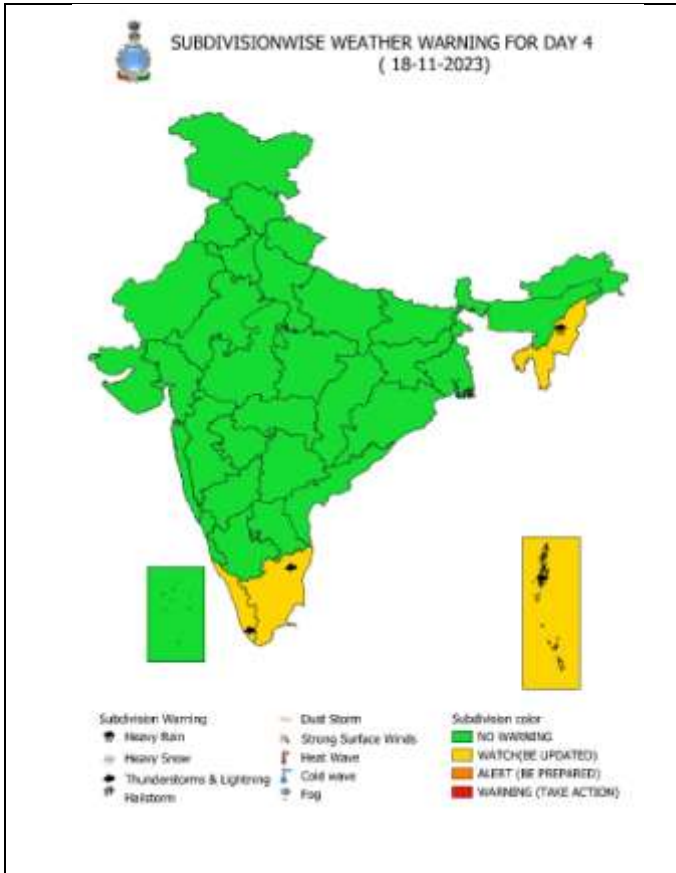
— ≥ 64 KT (≥118 KMPH)

IMPACT OVER THE SEA

MSW (knot/kmph)	Impact	Action
28-33 (52-61)	Very rough seas	Total suspension of fishing operations
34-49 (62-91)	High to very high seas	Total suspension of fishing operations
50-63 (92-117)	Very high seas	Total suspension of fishing operations
≥ 64 (≥118)	Phenomenal	Total suspension of fishing operations

WEATHER WARNING GRAPHICS





Fishermen warning graphics

